

Dryer – Professional

proLine D490 / D650



A strong team: The proLine dryer The Game Changer completes the professional laundry process. Its running time and programmes are perfectly matched to proLine washing machines. The radial-axial air-flow and the precise moisture measurement of the smartDry function ensure fast drying. Super-fast, in fact.

Models



proLine D490
Stone
4256.1



proLine D650
Stone
4257.1

Features

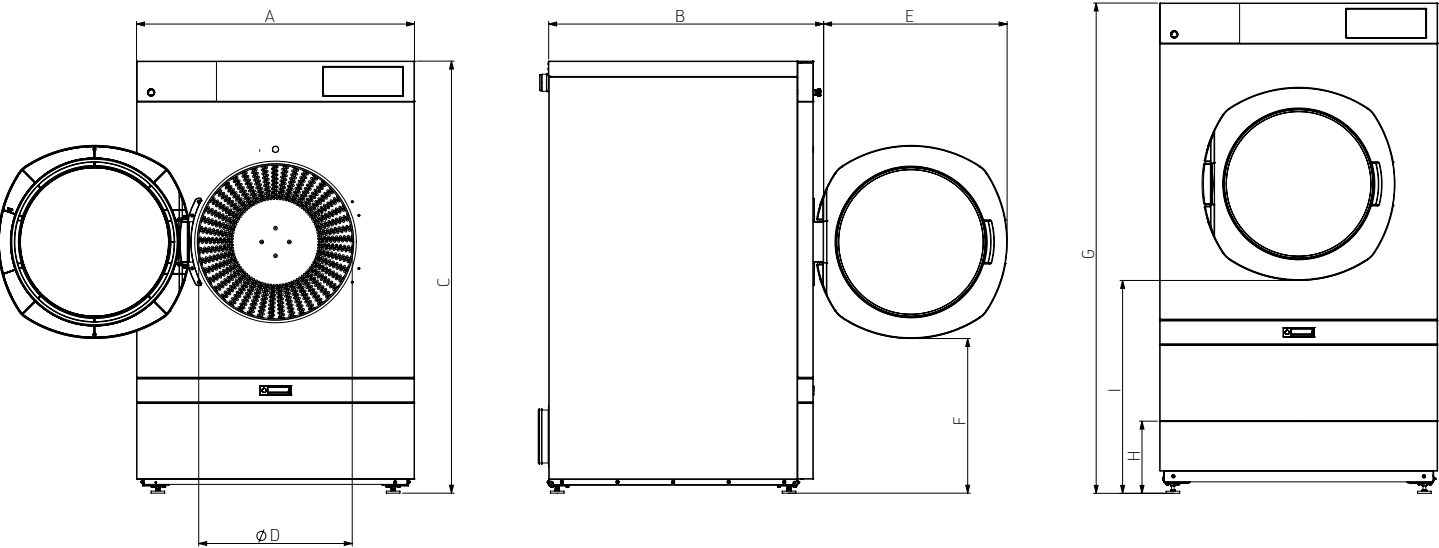
- Industrial dryer for gentle fabric care
- Intuitive operation with 4.3" colour display
- «Expert» control with 19 standard programmes
- Robust construction for a long durability (Swiss made and designed for over 30,000 operating hours)
- High efficiency through axial-radial airflow and optimised heat distribution
- Stainless steel drum for efficient drying processes
- Maintenance-free direct drive and drum reversing
- Language selection button for 23 different languages
- Pull-out fluff filter drawer (easy to use)
- Door hinge left (can be changed to right on site)

Options

- WLAN interface for programme and software updates
- Standard machine plinth
- Potential-free contact for external ventilation control
- Mains blocking set (load shedding/current peak)

Technical data Dryer proLine

Brand names		Schulthess	Schulthess
Model name		proLine D490	proLine D650
Product number		4256.1	4257.1
Features			
Load (1.20)	kg	24	33
Drum capacity	l	490	650
Drum diameter	mm	975	975
Drum depth	mm	656	875
Diameter of filling aperture	mm	580	580
Evaporation rate	l/min		
Drying rate	kg/h		
Energy consumption	kWh/kg		
Electric connection			
Supply voltage	V	400 3N~ / 50 Hz	400 3N~ / 50 Hz
Connected load	kW	30	37
Heat output	kW	29	36
Performance Drive	kW	0.75	0.75
Fuse protection	AT	50	63
Ventilation installation			
Extraction rate (max.)	m³/h	1250	1250
Air outlet	Ø mm	200	200
Cable resistance on site	max. Pa	480	480
Dimensions			
Width	mm	1050	1050
Height	mm	1635	1635
Depth (door closed)	mm	1040	1290
Weight (empty)	kg	300	330
Additional appliance data			
Name and address of provider		Schulthess Maschinen AG, CH-6330 Cham ZG	Schulthess Maschinen AG, CH-6330 Cham ZG



	A	B	C	D	E	F	G	H	I	Weight (kg)
D490	1050	1040	1635	580	695	585	1855	275	805	300
D650	1050	1290	1635	580	695	585	1855	275	805	330